

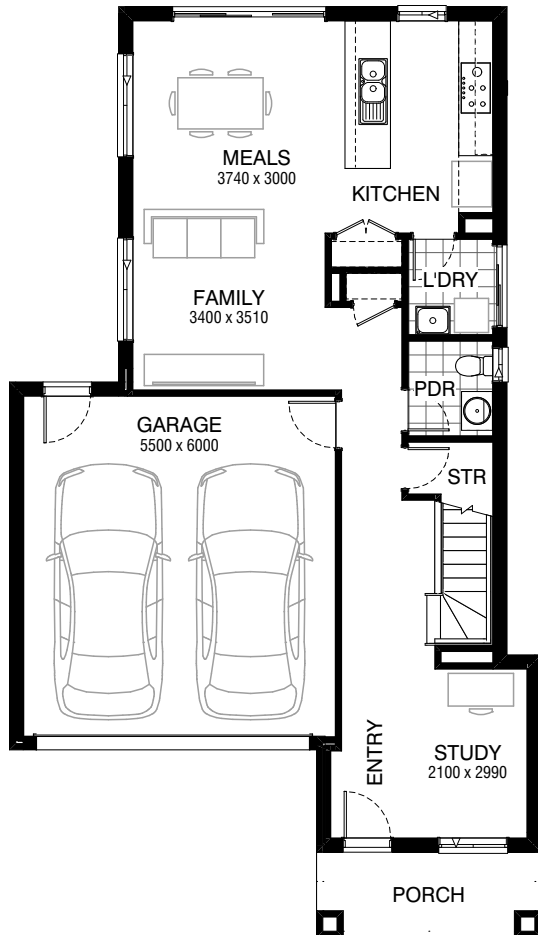
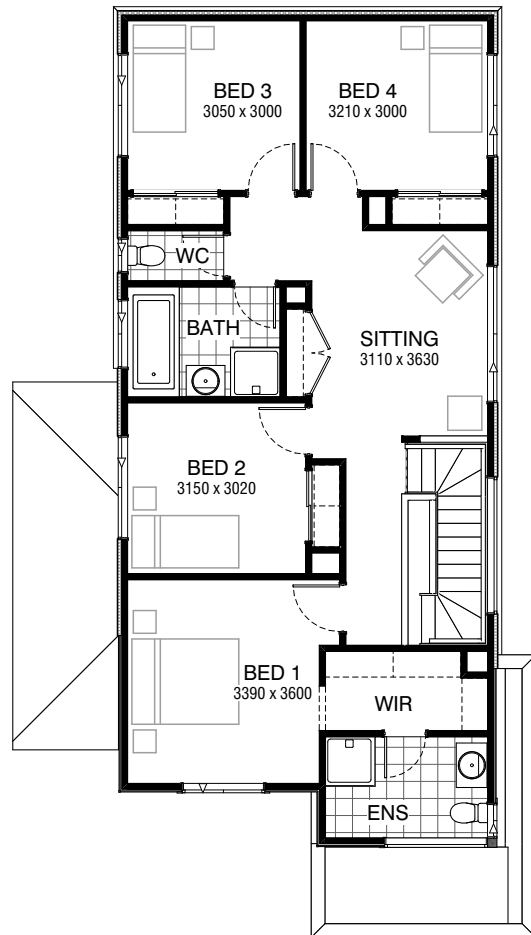


Total squares **22.3sq**

 **4**  **2.5**  **2**



GROUND FLOOR



FIRST FLOOR

FLOORPLAN OPTIONS

All available ready-to-go floorplan options for this design can be viewed on the following pages, or visit www.burbank.com.au.

Facades available:

Condor, Matisse, Monet

Overall home width 9.35m

Overall home length 16.37m




Residence	165.5m ²	17.8sq
Garage	36.1m ²	3.9sq
Porch	5.9m ²	0.6sq
Alfresco	19.1m ²	2.1sq
Total	207.5m²	22.3sq

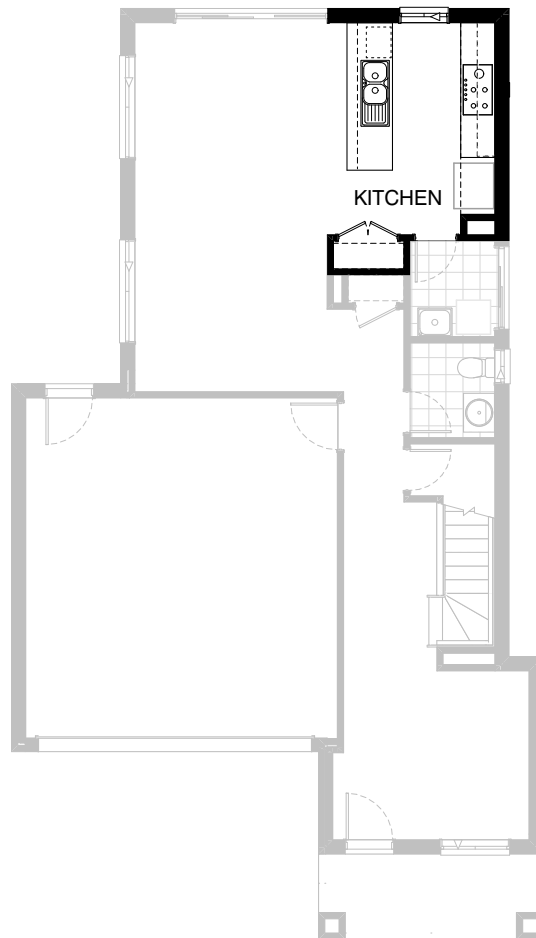
Listed details based on Condor façade floorplan (illustrated)

*Copyright conditions. All photos and illustrations are representative only. Floor plans and specifications may be varied by Burbank without notice, the dimensions are diagrammatic only and a Building Contract with final drawings will display correct dimensions and detail. All designs are the property of Burbank and must not be used, reproduced, copied or varied, wholly or in part without written permission from an authorised Burbank representative. Copyright Burbank Australia Pty Ltd. ABN 91 007 099 872. Builders Registration Number CDB-U-52603.

Call 13 BURBANK
Visit burbank.com.au

FLOORPLAN OPTIONS


 **4**  **2.5**  **2**

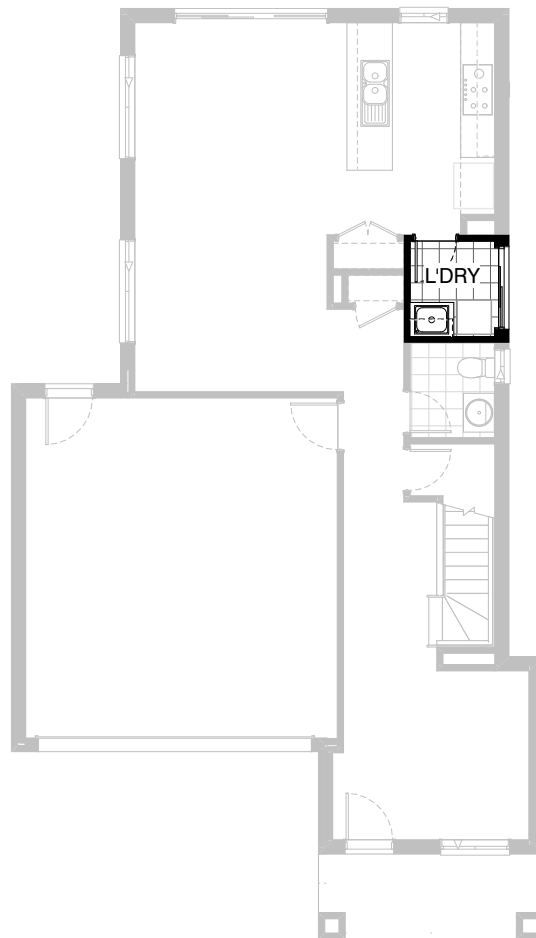


Option K-1

Provide Kitchen Upgrade with additional
1no. MW. provision with pot drawer below
in lieu of standard 1no. 600mm base cabinet.

FLOORPLAN OPTIONS




 **4**  **2.5**  **2**

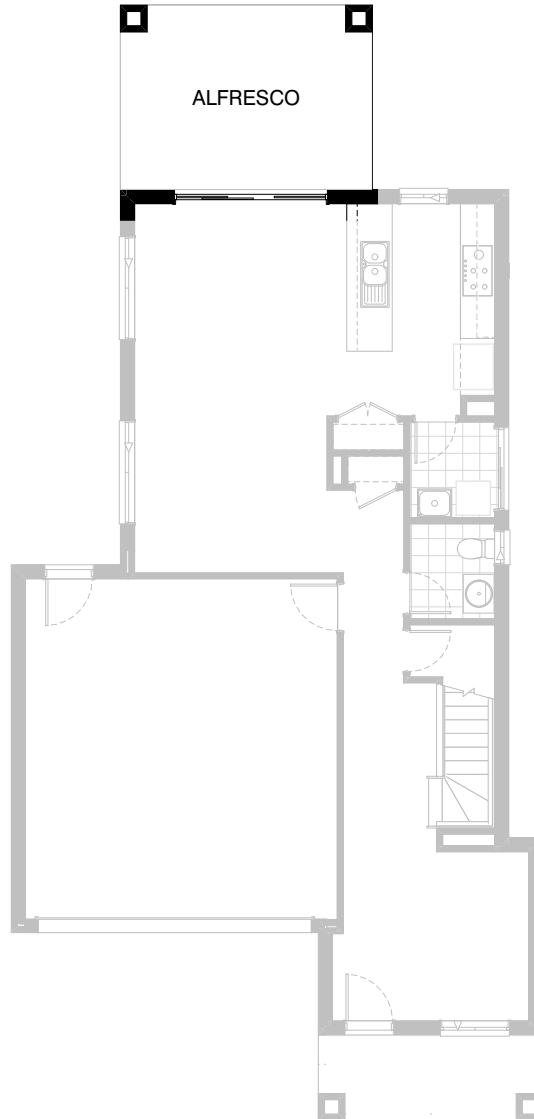


Option LD-1

Provide Laundry Option with s.s. inset trough
in 32mm laminated bench top.
1no. 700mm base cabinet and
1no. 700mm overhead cabinet and
additional tiled splashback and bench top to suit.

FLOORPLAN OPTIONS




 **4**  **2.5**  **2**

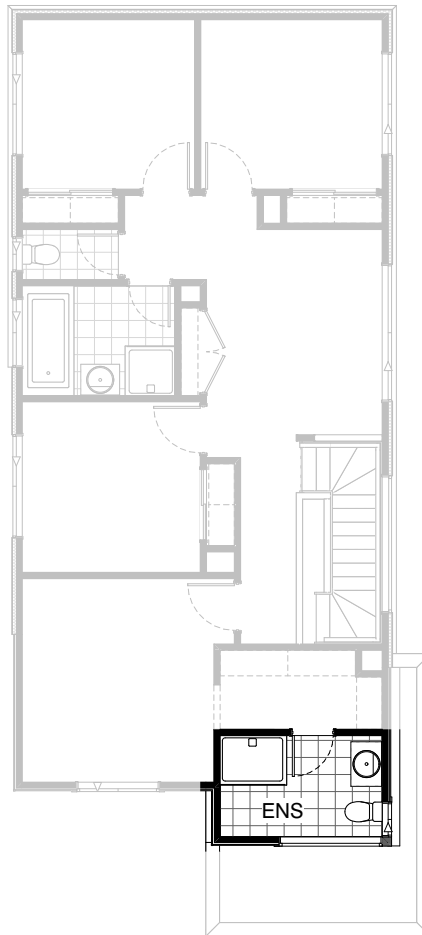


Option EP1-1

Provide Alfresco to rear of Meals with tiled hip roof, structural concrete floor, light point and 2no. 470mm x 470mm brick piers.
Increases area by 14.35m².
Increase length by 3240mm.

FLOORPLAN OPTIONS




 **4**  **2.5**  **2**

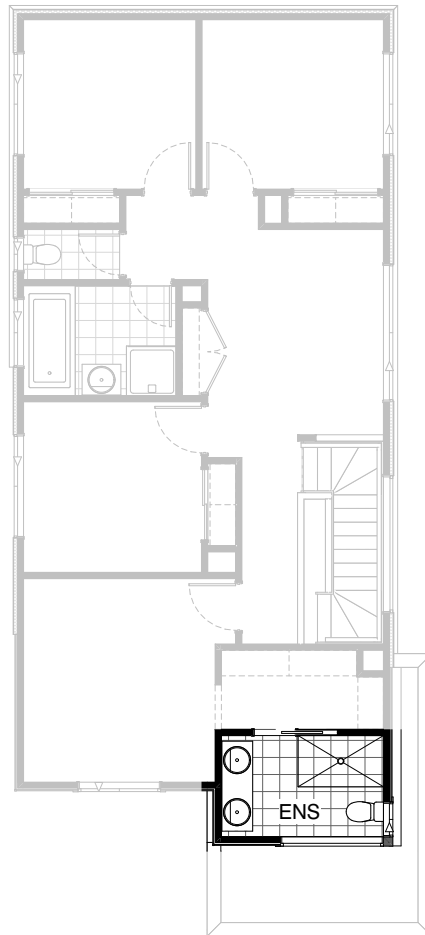


Option ENS-1 FF

Provide Ensuite Upgrade with additional
1no. 1200mm x 900mm polymarble shower
base in lieu of standard 900mm x 900mm
polymarble shower base.

FLOORPLAN OPTIONS

 **4**  **2.5**  **2**



Option ENS-2 FF

Provide Ensuite Option with 1no. 1500mm x 900mm tiled shower base in lieu of standard and 1no. 1582mm vanity basins with 2no. basins and 1no. 720mm cavity sliding door to suit.